

Thomson One Banker (Company Analysis)

INTRODUCTION

Thomson One Banker is a powerful financial analysis database providing a wide range of data for over 80,000 active internationally quoted companies. It also provides more limited data on larger private companies, data on international stock exchange indices and details of international mergers and acquisitions since 1977. Thomson One Banker provides at least five years' financial data although company filings date back further. More advanced users can download a powerful Excel add-in tool for downloading company analysis data directly into Excel. Use Thomson One Banker company analysis module to:

- Analyse company financial data, share price data and forecast estimates
- Locate and download company filings including annual reports, 10-K, 20-F and IPO reports
- Analyse company performance against standard/customised peer groups
- Analyse performance and constituents of international stock exchange indices
- Analyse company mergers & acquisitions activity

In addition to company analysis, Thomson One Banker has modules that provide data on ownership, private equity and deals, which includes mergers and acquisitions (M&A) and initial public offerings (IPOs).


ACCESSING THE DATABASE

- Thomson One Banker can be accessed via the MBS Library Website:
<http://www.mbs.ac.uk/library>
- Select '**Electronic Resources**', '**Databases**', '**Company Information**'
- **Nb.** Use 'Special Username and Password' link to obtain access details.

SEARCHING THE DATABASE

- **Company Information**, inc. groups of companies (Portfolios).


Example Search - Tesco PLC.

Type 'Tesco' in the Companies search box (top left) and click on the magnifying glass icon . This produces a number of Tesco companies. Select (TESCO PLC) from the results. Company Overview information is displayed.

'Company Analysis' options are displayed on the left of the screen, such as News & Events, Prices (with Interactive Price Chart), Financials (with Worldscope standardised data), Filings, Deals, Ownership.

'Filings', for example, includes: Annual Reports (PDF Full Text), Information Circulars and Prospectuses.

When comparing a number of companies, the Portfolio function can be used.

Click on the circle  on the left of the screen next to 'Portfolios'. This opens a 'New Set' space to form a Portfolio and offers a number of functions represented by icons:

 Print.  Export (to Excel).  Edit.  Save.  Open.  New.

Example Search - Portfolio for Tesco, Sainsbury (J) and Morrison (WM)

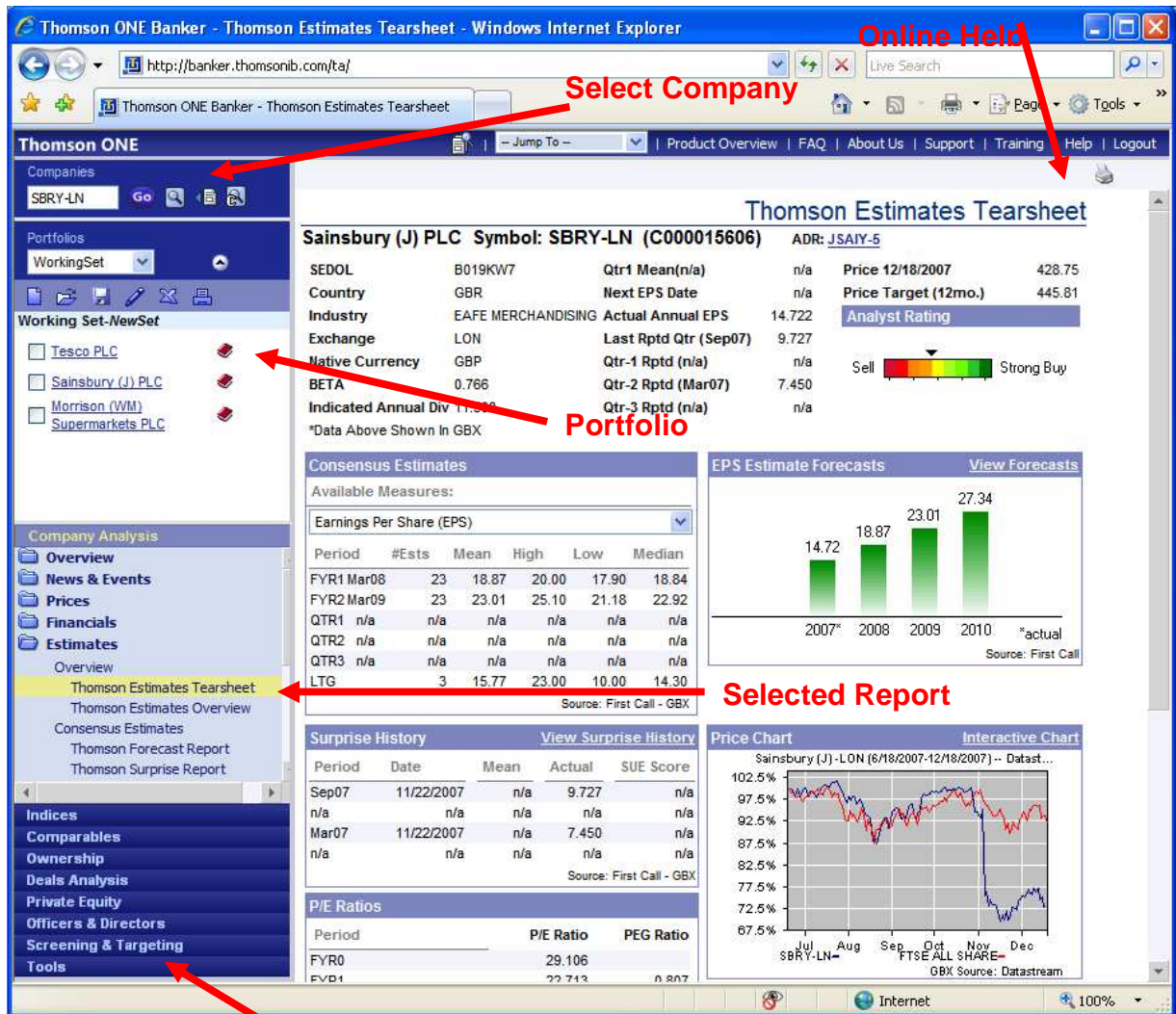
Complete a company search for Tesco PLC and then add to the Portfolio using the Filing Cabinet icon . Repeat to add further companies – for example, Sainsbury (J) PLC, Morrison (WM) Supermarkets PLC. Select the box by the side of each company, so these are available to be saved if required or analysed using the 'Comparables' tab on the left of the screen. Hence, data for Tesco, Sainsbury and Morrison can be compared:

- Overview: including, Quote Symbol, Company Name, Industry, Country, Exchange, Last Price Close, ratios.
- Performance: including, Performance Analysis, Profitability Analysis, Liquidity Analysis.
- Financials: including, Sales, Net Income, Market Cap., Total Assets, Total Liabilities, Current Key Margins (%).
- Prices: including, Valuation Report, Guidance List, Per Share Data Summary.
- Earnings: including, Earnings Growth Summary, Analyst Sponsorship Summary.
- Custom: including, Custom Report (Create, Open, Save Tabular Report).

Nb. Portfolios can be exported to a spreadsheet using the Excel icon (top right of screen).

Nb. Even if companies selected are UK [LON] (London stock exchange), the default currency is US Dollars. For example, the 'Last Price Close' value for Tesco displayed on 4th September 2009 is listed as 6.041. However, by clicking on the '\$' sign at the top right of the screen, currency options are displayed (US Dollar, British pound, Euro, Japanese Yen). By selecting British Pound, the closing price shows a more typical value for Tesco, of 3.698, or about 369 pence.

SCREEN SHOT



Tools for downloading Excel Add-In

SEARCHING THE DATABASE

Screening & Targeting. Companies can be selected via the 'Screening & Targeting' module, e.g. by country and sector to identify a company or set of companies (Portfolio) to analyse.

- **Indices information.**


Thomson One Banker has access to many UK and foreign stock market Indices. See below for examples and typical values (as at end of 10th September 2009):

FTSE 100	4987.68	UK (FTSE: Financial Times Stock Exchange) [FTSE100]
CAC 40	3705.87	France [FRCAC40]
DAX 30	5594.77	Germany (Performance) [DAXINDEX]
NIKKEI 225	10513.67	Japan (Stock Average) [JAPDOWA]
DOW JONES	9627.48	USA (Industrials Average) [DJINDUS]
NASDAQ	2084.02	USA (Technology Composite) [NASCOMP]
S&P 500	1042.21	USA (Composite) [S&PCOMP]
HANG SENG	21069.56	Hong Kong [HNGKNGI]

In the case of the FTSE 100, this includes the top 100 UK public limited companies (PLCs) by market value (capitalisation: number of shares multiplied by share price). With changes in share price, the value of companies goes up and down, meaning companies enter and the leave the index on a 3 monthly basis generally (in March, June, September, December).

Example Search – FTSE 100 Constituent Companies

Click on the 'Indices' tab on the left of the screen.

Type 'FTSE 100' in the search box and click . Select the top option (FTSE 100). At the message 'The SVG Viewer is not installed. Download now', click 'Cancel'.

Overview data displayed:

Price: 4987.68 (end 10/9/09: the value for FTSE 100 price index).

Also, Total Return, Market Value and the top 10 constituents by weighting are displayed.

Click 'Constituents' tab on the left of the screen to display the 100 companies which make up the FTSE 100, in alphabetical order.

Nb. A drop down box at the top of the screen allows currency options to be selected (Euro default).

By the side of each company name is a bar chart icon - click on this to display chart.

Line Chart is displayed:

Company Share Price v FTSE 100 Price Index.

FURTHER HELP

ADDITIONAL THOMSON ONE BANKER RESOURCES

Installing the Excel Add-In Tool

The Excel Add-In tool pulls live data directly into Excel from Thomson One Banker. The add-in provides dynamic search functions and customised analytical models can be created using over 2,000 data fields. The add-in is useful if you want to get information about multiple companies.

- Select '*Tools*' from left hand menu.
- Select '*Office Tools*' and follow the download instructions provided in this section.

You can also download a large number of pre-built reports for the Excel Add-In

Deals

The deals module provides access to data on equity deals (IPOs, new share issues), mergers and acquisitions and to syndicated loans (larger loans shared between multiple banks).

Private Equity

The private equity module provides access to global data on venture capital firms, private equity investment deals and companies backed by venture capital.

Ownership

The ownership module provides details on the top investors and insider holdings in internationally quoted companies. For investment managers and mutual funds it also provides details of their investment portfolios.

Further Help: Thomson One Banker has a detailed online help facility.

- Select the '*Help*' icon from the top right hand menu to display help contents

Technical Problems: If you are experiencing any technical difficulties using this database please contact a member of staff at the Eddie Davies Library:

Eddie Davies Library Enquiry Service.

Tel 0161 275 6507 Email: libdesk@mbs.ac.uk