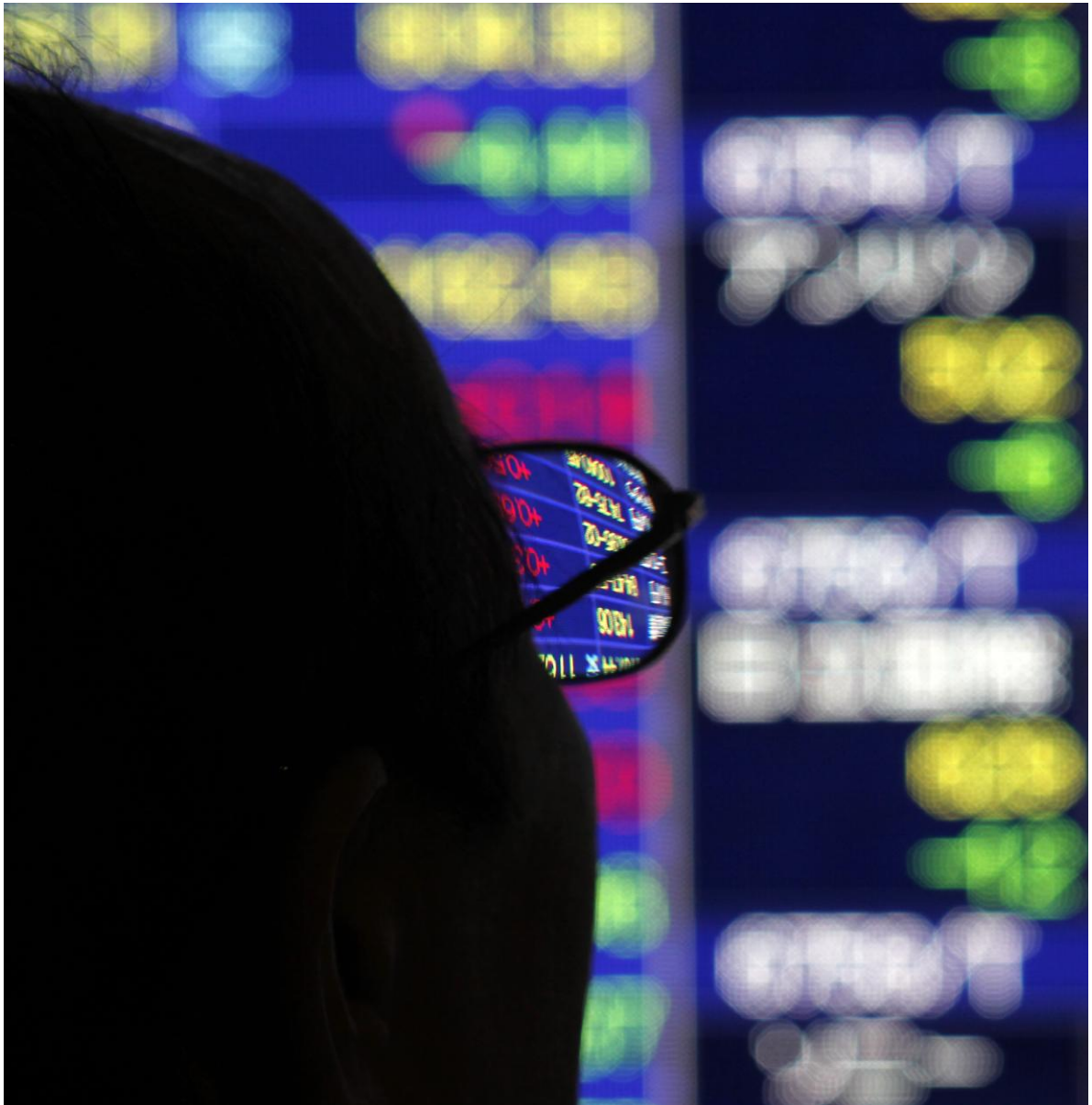


How to research

Mergers and Acquisitions



How to Research Mergers and Acquisitions

Definition and Introduction:

A merger or acquisition is a combination of two companies where one corporation is completely absorbed by another corporation. The lesser company loses its identity and becomes part of the larger corporation, which retains its identity. A merger extinguishes the merged organisation, and the surviving organisation assumes all the rights, privileges, and liabilities of the merged company.

This Resource Guide will provide an overview of the key databases available via the MBS Library Website connected to this area of analysis and will highlight the scope of relevant data accessible when undertaking Mergers and Acquisitions research. It will also provide details of other external sources which may be of interest.

Types of Data available for M & A Research:

- Company Financials / Deals Data
- Target Sector Listings
- Investment Analysis
- Market Analysis
- Company/Industry News
- Specialist databases
- External Sources

Key Databases available for M & A Research:

- Thomson one Banker
- Fame / Orbis
- Thomson Research
- Keynote / Mintel / GMID
- Factiva
- Bloomberg

Finding the Databases

The databases available for M & A research can be found on the MBS Library Website:

<http://www.mbs.ac.uk/library>

- Select Electronic Resources, Databases

Company Financials / Deals Data: Thomson One Banker

- Analyse up to 10 years current and forecasted financials
- Examine historical share price performance
- Find historical annual reports
- Analyse international mergers and acquisitions

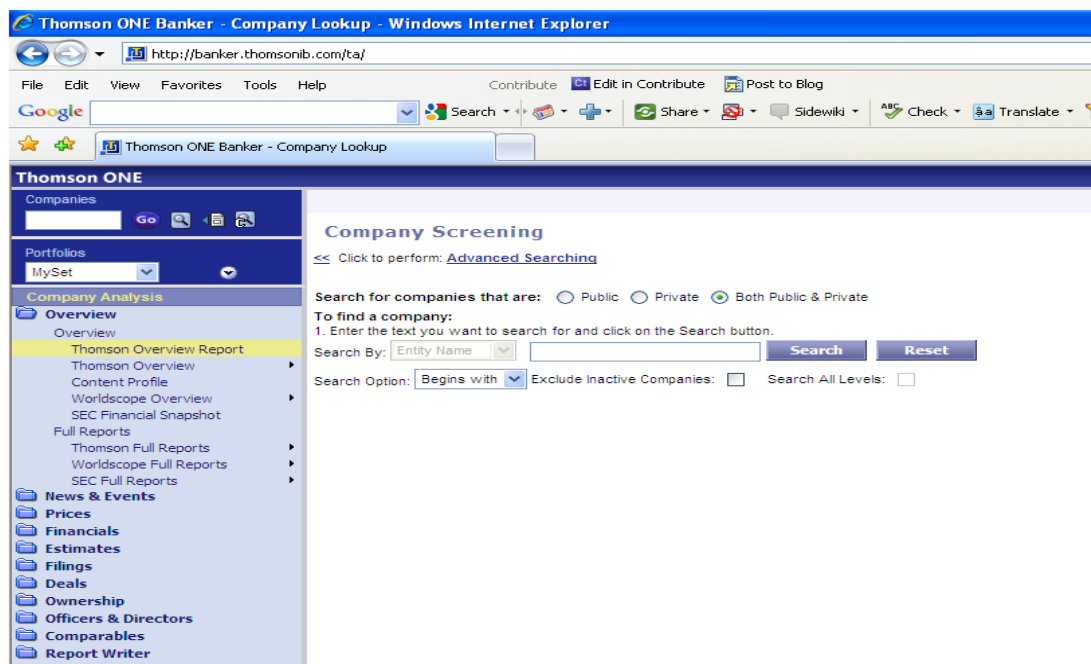
Thomson One Banker

- Over 60,000 Public international quoted companies
- Holds 10 years of Financial data
- Provides access to annual reports

Search for companies / deals using:

- Company Analysis (financials, share price performance, forecasts, filings)
- Deals Analysis (advanced search)

Find this database in the “**Company information**” section on the **Library databases** page



Target Sector Listings: FAME/ORBIS

- Identify and create target sector lists for UK / International public and private companies
- Establish top companies / key competitors in specific markets / sectors
- Analyse company performance against key competitors
- Examine corporate structures, board members & key contacts

FAME

- 2.5 million public / private UK companies
- Vital Mergers and Acquisitions profiles
- Key Stock data

ORBIS

- Top 230,000 international public / private companies across 200 countries
- Essential Shareholder and Director information.

Identify companies by:

- Name
- Country, region, city
- Industry Sector
- Company Size (eg: turnover, Pre-tax profit, employees)

Find these databases in the “**Company Information**” section of the **Library Databases** page.

**Investment Analysis:
Thomson Research**

- Insider commentary from leading international investment banks
- Detailed financial ratios and forecasts for companies, industry sectors and economies
- Authoritative insight for sales, forecasts and strategy valuation.

Thomson Research

- Analysis reports for over 60,000 companies,
- Leading contributors such as Merrill Lynch, Credit Suisse, Morgan Stanley
- In depth analysis of companies, industries and markets

Search by:

- Company Name
- Industry Sector
- Country

Find this databases in the “**Company information**” section on the **Library databases** page

**Market Analysis:
Keynote/Mintel/GMID (Global
Market Information Database)**

- Market analysis for UK/International Industrial/consumer markets
- Research market size, segmentation, trends, forecasts, competitors and buying behaviour
- Compare product volume and value sales
- Analyse international demographic profiles and consumer expenditure patterns

Keynote/Mintel

- Tailored market analysis reports for UK industrial / consumer sectors
- Search by report title, sector, keyword

GMID

- Tailored market analysis for international consumer sectors
- Statistical datasets for international industries and socio-demographic/economic indicators
- Search using “Menu Search”, industry sector, country or consumers

Find these databases in the “**Market Research**” section on the **Library databases** page

Company / Industry News:

FACTIVA

- Research company, industry developments from leading global news sources
- Examine latest company developments (earnings, ownership/structural changes, new products etc)
- Examine impact of latest political/economic events on companies/industries

FACTIVA

- Over 10,000 international, national and regional newspapers, newsfeeds and trade publications
- Up to 20 years news updated daily

Search and filter news by:

- Keyword
- Company name, publication, industry, region or type of news
- Specify news by date
- Easy to manage/edit findings

Find this database in the “**News/Trade & Industry News**” section on the **Library Databases** page.

Specialist Databases

BLOOMBERG

Use Bloomberg to compliment your use of our other Databases to improve your M&A Research.

- Current and Historical Financial data
- Share price decline and growth with historical tracking options
- Current and archived News sources
- Detailed investment analysis
- Market share demographics

Access to Bloomberg Professional

Bloomberg is available in both the Eddie Davies Library and the Precinct Library to current students and staff of the University. Please contact the Library to book a session.

External Sources: Getting Started

In addition to the Library databases the following may also be of value.

COMPANY WEB SITES: INVESTOR RELATIONS

Individual company websites provide a valuable overview of a company. In addition if the company is a public limited company there will be an Investor Relations section providing annual/interim reports and other financial data.

LONDON STOCK EXCHANGE

A useful site for acquiring up to the minute trading information, real time market data services provide all the activity of the London Stock Exchange markets, live, as it happens. every second of the trading day the London Stock Exchange generates masses of information ranging from data on individual trades and share price movements to company announcements

- [London Stock Exchange News](http://www.londonstockexchange.com)
<http://www.londonstockexchange.com>

Contact us:

MBS Library Enquiry Service

Eddie Davies Library

Tel: 0161 275 6507

Email: libdesk@mbs.ac.uk

Precinct Library

Tel: 0161 306 3200

Monday Friday: 09.00 - 19.00

Saturday: 10.00 - 17.00

BUSINESS ANSWERS 24/7

<http://www.mbs.ac.uk/bizlib247>

Try our **Business Answers 24/7**, a searchable database of frequently asked questions providing guidance on the library databases and business research topics.



Keep up to date with the latest library news via our Twitter Feed