

The University of Manchester Library Content Development Policy Geography

Monday, 30 April 2012

Contents

Introduction	2
Collection evaluation	2
Bookfund and resource allocations.....	3
Collection areas.....	3
Document Supply Service and Inter-Library Loans.....	4
Teaching and Learning	4
Digitisation.....	5
Manchester e-Scholar.....	5
Stock editing	5
Donations	5
Recommendations	5
Contacts	6
Appendices	6
Appendix 1	6
Appendix 2	9
Appendix 3	16
Appendix 4	19
Appendix 5	21

Introduction

This document presents the Content Development Policy for Geography. It includes a description of the Library's existing collections and an outline of current collecting areas.

Set within the context provided by an overall Content Development Policy and a related Collection Management Policy, its purpose is to ensure that the selection of resources - books, journals, and other kinds of material – whether print, electronic or other format, reflect the teaching and research priorities of the School and provide best value in both financial and academic terms.

Collection evaluation

The Library has substantial collections in all fields of geography, and includes books and journals, in print and digital formats. The principal collection of printed books, including all reading list items, is kept on Blue 2 and Blue 3 in the Main Library but a significant collection is also housed in the Kantorowich Library. Most physical geography books are shelved at 550-551 and most human geography books are shelved at 910-919.

Appendix 1: Provides an overview of the geography bookstock by classmark, date of publication, and location.

Appendix 2: Lists the books purchased from the geography book fund during the 2008-09 financial year, excluding items purchased as part of other subscriptions.

Appendix 3: Lists current journal subscriptions in the area of geography. Because of the difficulties in deciding on what constitutes a geography journal, it is not necessarily a complete list. However all journal holdings and subscriptions are listed in the Library catalogue, and all subscriptions to electronic journals are listed in its E-Journals A-Z listing.

Appendix 4 lists other relevant subscriptions to bibliographic databases and book collections in the area.

Appendix 5 lists texts held in Special Collections

Bookfund and resource allocations

Book funds are allocated in June/July each year for the following financial year (August – July). This book fund is to provide for all non-subscription library materials including printed textbooks and research monographs, electronic books, and any other one-off purchase requirements.

Journals and other subscription items are purchased from a separate fund which at present accounts for over 85% of the cost of all purchases.

Collection areas

To support the Discipline's scholarly and research activities the Library will acquire material published in the areas listed below.

Human geography;

Biogeography
Cultural geography
Development studies
Ecology
Economic geography
Environmental policy and planning
Historical geography
Medical geography; geography of health
Planning and land use
Political geography
Population; Migration
Regional geography
Social geography
Sustainable development
Tourism
Transport geography
Urban geography

Physical geography;

Glaciology, meteorology and climatology, geomorphology, oceanography, hydrology, paleoecology, quaternary studies, natural hazards, soil erosion, pollution.

Cartography: maps, atlases, remote sensing, geographic information systems.

The interdisciplinary nature of geography and its publications means that the subject scope and coverage cannot be described in isolation. Please also refer to the collection development policies for Earth, Atmospheric & Environmental Sciences and development studies.

Document Supply Service and Inter-Library Loans

Although the Library will try to accommodate all requests for purchase, books which lie outside the areas listed above or are out of print can be obtained on loan from another library through the Document Supply Service. Such books are usually borrowable for up to 6 weeks at a time. Journal articles and other material not available from within the Library's collections can also be obtained through this service.

Teaching and Learning

The Library will support all taught course modules.

Multiple copies and / or electronic copies of texts will be purchased or subscribed to as appropriate. Subject to copyright restrictions the Library will digitise materials, for instance book chapters, or journal articles not otherwise available electronically, if required for taught course modules.

Reading lists and estimated student numbers should be sent to the Faculty Team Librarian by July 31 and November 30 each year so any new material can be purchased and processed in time for the forthcoming semester.

Reading lists will be added to the Library's reading list system, *Link2Lists* which provides links to catalogue entries and directly to electronic texts where they are available. Course modules within the Blackboard VLE can link to *Link2Lists*.

Reading list texts can be 7-day loan or put into the High Demand Collection from where they can be borrowed for shorter periods.

Digitisation

Subject to copyright restrictions the Library will digitise material according to its Digitisation Policy. Priorities include reading list items – book chapters or journal papers – and items from Special Collections.

Manchester e-Scholar

The University's institutional repository, Manchester eScholar, manages and disseminates the intellectual outputs of the university. Since the beginning of 2010 all accepted PhD theses have been added to the repository.

Stock editing

Most stock is kept on the Library's open shelves. As space is at a premium, especially in the Main Library, periodic weeding is used to remove less-well used material to store from where it can be retrieved usually within one working day.

Unused duplicates are disposed of from time to time.

Weeding and withdrawal criteria are described in the Collection Management Policy.

Donations

Offers of donations are welcome, but they can normally only be considered for acceptance if they are within the collection areas detailed above.

Other factors taken into account in deciding upon acceptance are listed in the Collection Management Policy.

Recommendations

The Library welcomes recommendations for the purchase of books from staff and students of the School. Purchases are normally made if:

- Recommendations fall within the scope of the policy as described above;
- Funds are available;
- The item is not already in stock.

Usually:

- Only a single copy only of a printed book is purchased;
- They must be of an appropriate academic standard.

For reading list texts, multiple copies and electronic versions will be considered as appropriate. Recommendations can be made directly to the Faculty Team Librarian, or by filling in this form.

Journal recommendations are considered twice a year (May/June and November). Because of the forward financial commitment involved journal subscriptions usually have to be balanced by savings elsewhere in the subscription budget. Recommendations should be made through the School Library Representative.

Contacts

Faculty Team Librarian, Geography, Françoise Sullivan

0161-275-2802

francoise.sullivan@manchester.ac.uk

Geography Library Representative: Mark Jayne

SED Library Committee Chair: Chris Perkins

Appendices

Appendix 1

Stock Overview

Geography Stock, **Main Library**: Analysis

Geography Stock by Classification

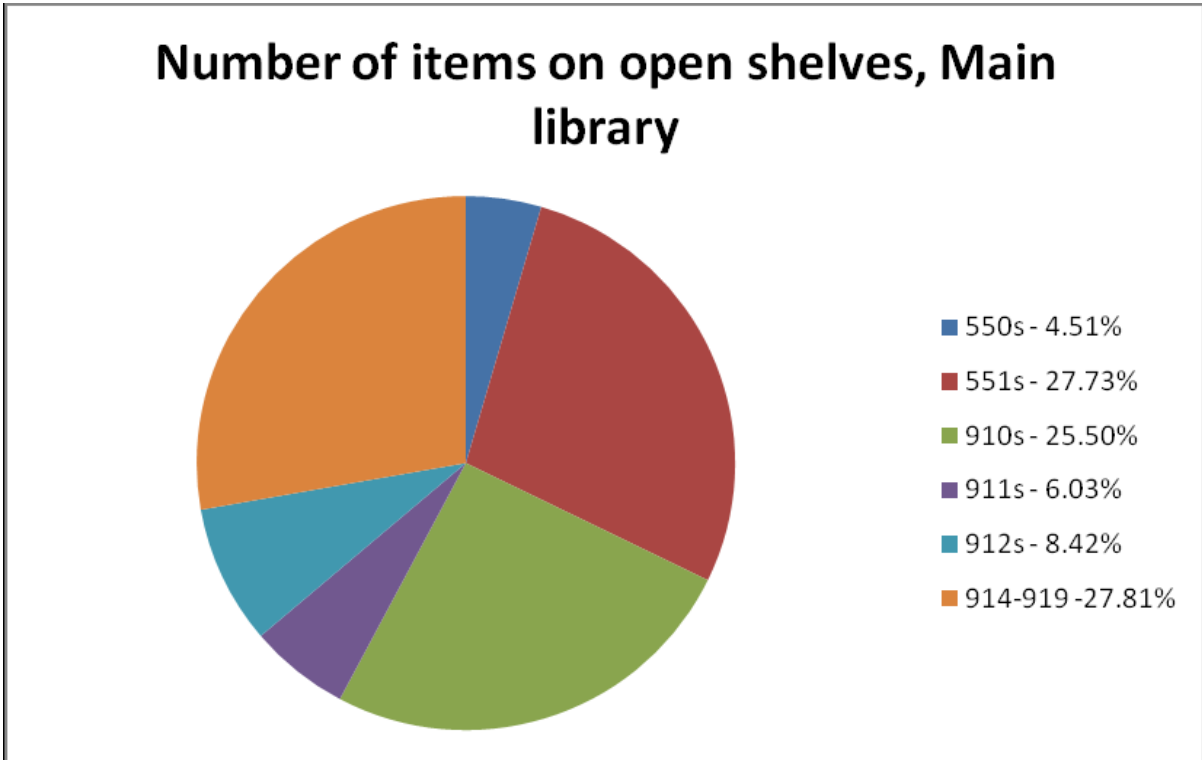


Figure 1

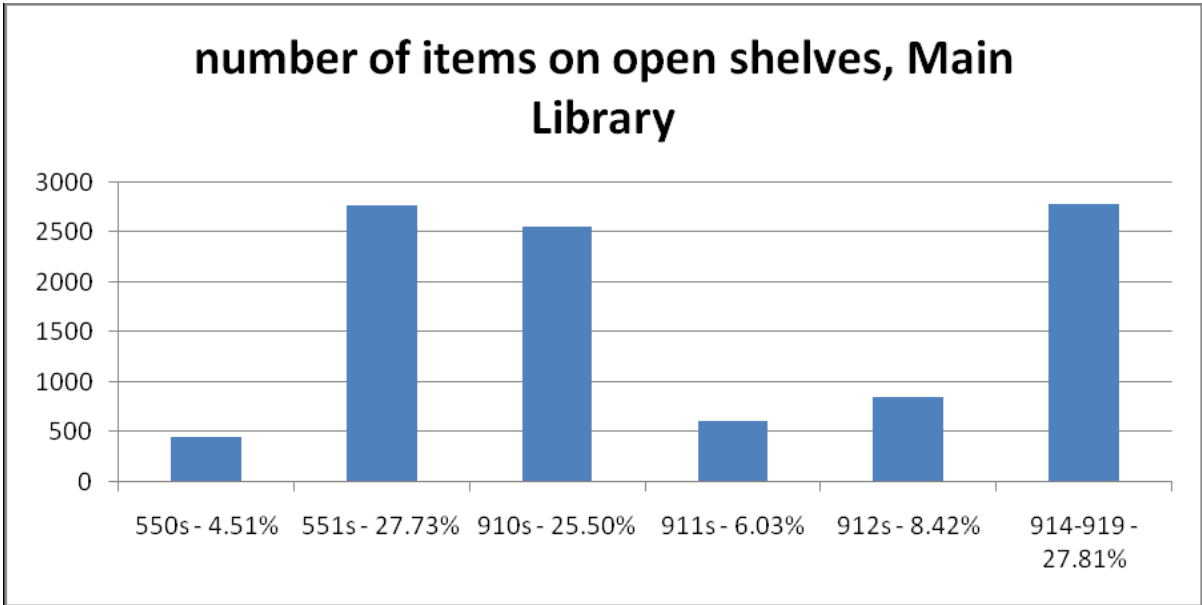


Figure2

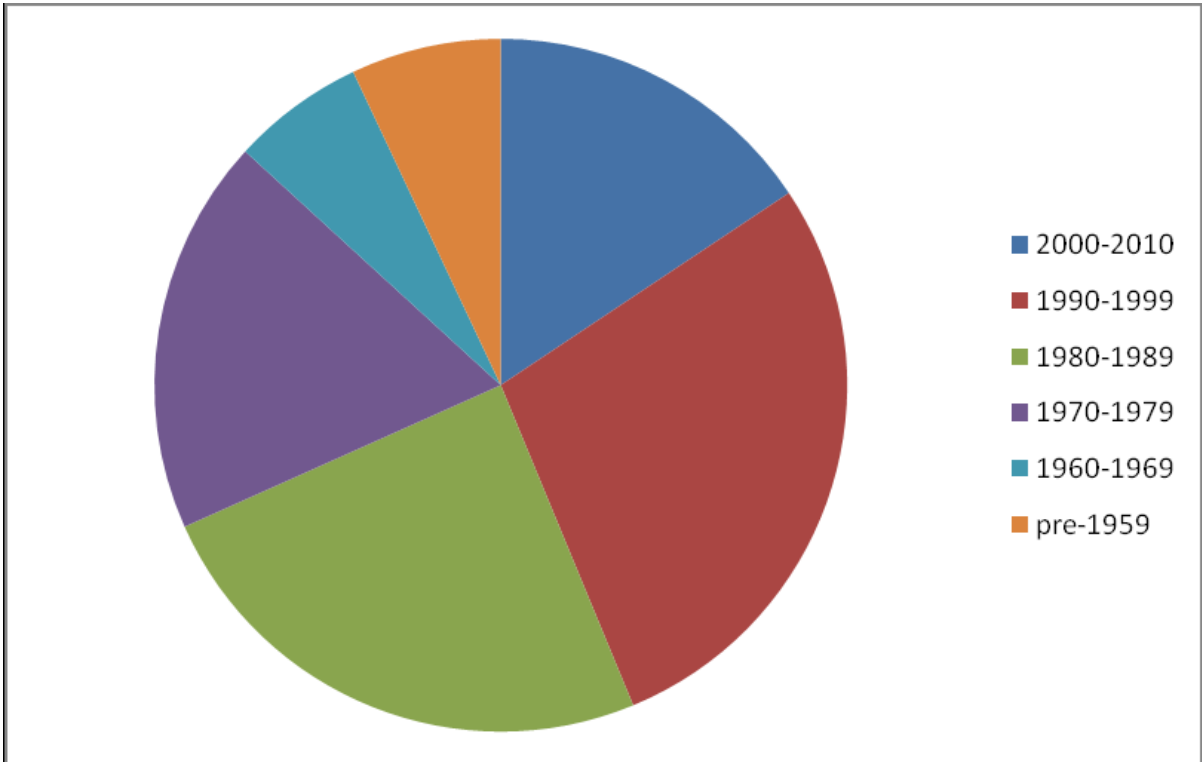


Figure 3

Geography Stock, Kantorowich Library: Analysis
Geography Stock by Classification

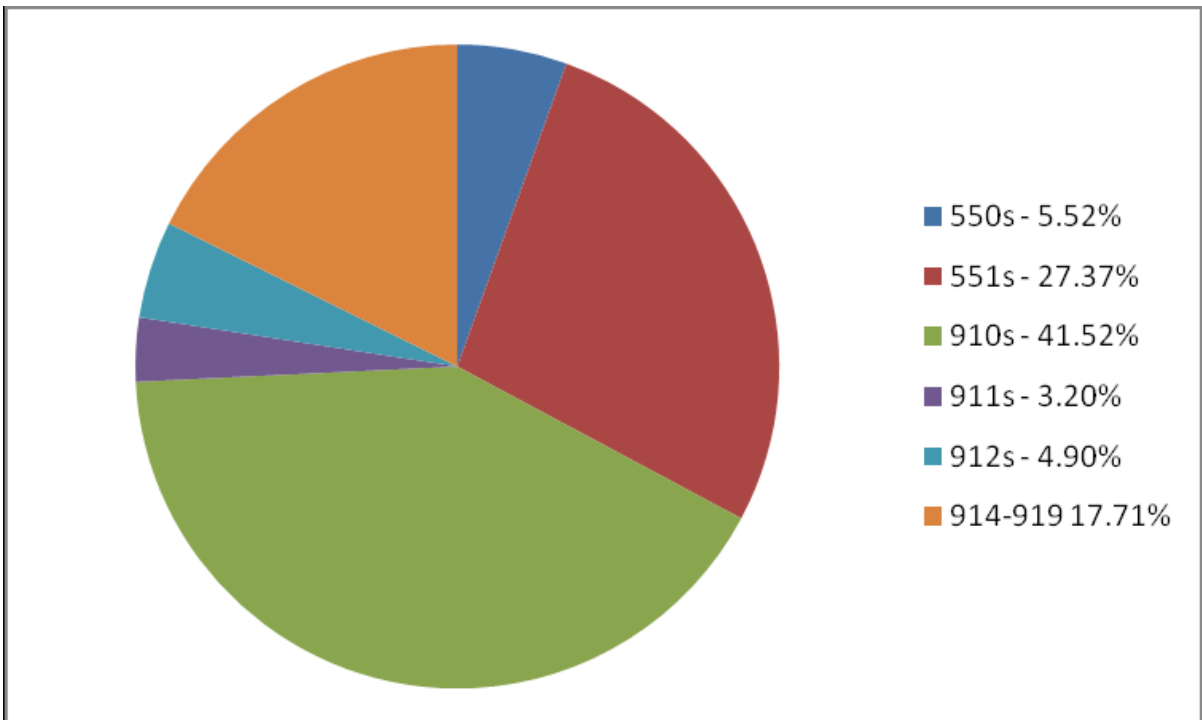


Figure 4

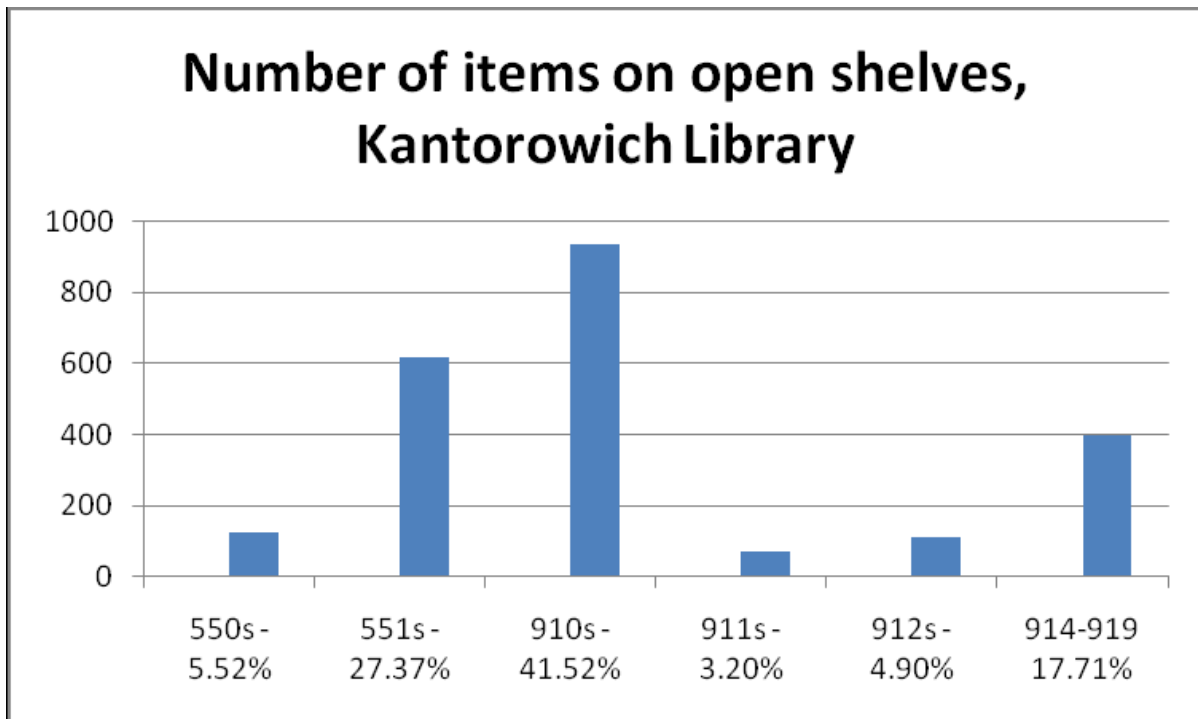


Figure 5

Appendix 2

Book purchases 2009-2010

Huggett, Richard J.	Physical geography : the key concepts	2009	Blue Area Floor 2	550.2
Scarth, Alwyn	Vesuvius : a biography	2009	Blue Area Floor 2	551.21
Payne, Tony; Bamber, Jonathan,	Mass balance of the cryosphere : observations and modelling	2004	High Demand	551.3111
Benn, Douglas I.	Glaciers & glaciation	2008	High Demand	551.3111
Bennett, Matthew	Glacial geology : ice sheets and landforms	2009	Blue Area Floor 2	551.3111
Paterson, W. S. B.	The physics of glaciers	1998	High Demand	551.3111
Strahler, Alan H.	Introducing physical geography	2011	Blue Area Floor 2	551.4
Cameron, T.	The Geology of the southern North Sea	1992	High Demand	551.4611
British Geological	The geology of the central North	1994	High Demand	551.4612

Survey; Gatliff, R. W.	Sea				
Andrews, I.	The Geology of the Moray Firth	1990	High Demand	551.4612	
Johnson, H.	The geology of the northern North Sea	1993	High Demand	551.4612	
Ahrens, C. Donald	Meteorology today : an introduction to weather, climate	2009	Blue Area Floor 2	551.5	
O'Brien, Karen L; Adger, W. Neil; Lorenzoni, Irene	Adapting to climate change : thresholds, values, governance	2009	Blue Area Floor 2	551.56	
Solomon, Susan,	Climate change 2007 : the physical science basis	2007	High Demand	551.56	
Johnson, Robert G., 1922-	Secrets of the ice ages : the role of the Mediterranean	2002	High Demand	551.56	
Zalasiewicz, J. A.	The Earth after us : what legacy will humans leave in the rocks	2008	Blue Area Floor 2	551.7	
Harrad, Stuart,	Student projects in environmental science	2008	Blue Area Floor 2	577	
Foster, John Bellamy	Marx's ecology : materialism and nature	2000	High Demand	577	
Pettenger, Mary E	The social construction of climate change : power, know	2007	High Demand	577.22	
Adams, W. M	Conservation	2009	Blue Area Floor 2	577.271	
Naviot, S.	Conservation biology for all	2010	Blue Area Floor 2	577.271	
Brockington, Dan	Celebrity and the environment : fame, wealth and power	2009	High Demand	577.271	
Marren, Peter	Nature conservation : a review of the	2002	High Demand	577.271	

Robbins, Paul	conservation of wildlife in Britain Environment and society : a critical introduction	2010	Blue Area Floor 2	577.271
Cox, C. Barry	Biogeography : an ecological and evolutionary approach	2010	Blue Area Floor 2	578.09
Reynolds, John Elliott,	Marine mammal research : conservation beyond crisis	2005	Blue Area Floor 2	599.5
Pearce, Jamie; Witten, Karen	Geographies of obesity : environmental understandings of the obesity	2010	High Demand	614.59398
Sullivan, Roger J.	Radar foundations for imaging and advanced concepts	2004	Blue Area Floor 2	621.3848
Toomay, J. C.	Radar principles for the non-specialist	2004	Blue Area Floor 2	621.3848
Birkeland, Janis,	Positive development : from vicious circles to virtuous	2008	Blue Area Floor 2	628
Sorensen, Neil; Willer, Helga; Yussefi, Minou	The world of organic agriculture : statistics and emerging trends 2008	2008	IDPM (Muriel Stott Centre)	631.99
Hunt, Colin A.G	Carbon sinks and climate change : forests in the fight	2009	Blue Area Floor 2	634.928
Dolin, Eric Jay	Leviathan : the history of whaling in America	2007	Blue Area Floor 2	639.226
Castree, Noel	The point is to change it : geographies of	2010	Blue Area Floor 3	910

Castree, N; Rogers, A.; Sherman, D. J.	hope and survival Questioning geography : fundamental debates	2005	High Demand	910.1
Bradbury, Ian K.	Scientific principles for physical geographers	2001	High Demand	910.1
Aitken, S.	Approaches to human geography	2006	High Demand	910.11
Katz, Cindi; Marston, Sallie A; Mitchell, Katharyne	Life's work : geographies of social reproduction	2004	Blue Area Floor 3	910.11
Martin, David; Flowerdew, Robin	Methods in human geography : a guide for students doing a research	2005	High Demand	910.11
Adams, Paul C.	Geographies of media and communication : a critical introduction	2009	Blue Area Floor 3	910.11
Anderson, Jon	Understanding cultural geography : places and traces	2009	Blue Area Floor 3	910.11
Cloke, Paul J.	Practising human geography	2004	High Demand	910.11
Hoggart, Keith	Researching human geography	2002	High Demand	910.11
Lindsay, James M.	Techniques in human geography	1997	High Demand	910.11
O'Sullivan, David,	Geographic information analysis	2010	Blue Area Floor 3	910.16
Woodward, Jamie C	The physical geography of the Mediterranean	2009	High Demand	910.4262
Clifford, N.	Key methods in	2010	Blue Area Floor 3	910.7

Jones, John Paul; Gomez, Basil	geography Research methods in geography : a critical introduction	2010	Blue Area Floor 3	910.7
Peet, Richard,	Modern geographical thought	1998	High Demand	910.9
White, Richard,	The organic machine : the remaking of the Columbia River	1995	Blue Area Floor 3	911.797
Bulson, Eric	Novels, maps, modernity : the spatial imagination, 1850-2000	2006	Purple Ground	912
Crampton, Jeremy W.	Mapping : a critical introduction to cartography and GIS	2010	Purple Ground	912
Egmond, Marco van	Covens & Mortier : a map publishing house in Amsterdam	2009	Purple Ground	912
Harmon, Katharine A.,	The map as art : contemporary artists explore cartography	2009	Purple Ground	912
Monmonier, Mark S.	No dig, no fly, no go : how maps restrict and control	2010	Purple Ground	912
Parker, Mike,	Map addict : a tale of obsession, fudge & the Ordnance Survey	2009	Purple Ground	912
Wood, Denis	Rethinking the power of maps	2010	Purple Ground	912
Wood, Denis	Seeing through maps : many ways to see the world	2006	Purple Ground	912
Farrell, Terry	Shaping London : the patterns and forms that make	2010	Purple Ground	912.4215

Akerman, James R.	the metropolis The imperial map : cartography and the mastery of empire	2009	Purple Ground	912, A45
Barber, Bruno; Construction Industry Research and Information Association	Archaeology and development : a good practice guide to managing risk	2008	Blue Area Floor 3	913.42
Schwinke, Theodore	Top 10 Prague	2009	Blue Area Floor 3	914.373
Scarpaci, Joseph L.	Cuban landscapes : heritage, memory, and place	2009	High Demand	917.291
Bassett, Thomas J.	The atlas of world hunger	2010	Atlases, Purple Ground	B1
Gilbert, Martin,	The Routledge atlas of Russian history	2007	Atlases, Purple Ground	B1
Gilbert, Martin,	The Routledge atlas of the First World War	2008	Atlases, Purple Ground	B1
Gilbert, Martin,	The Routledge atlas of the Second World War	2009	Atlases, Purple Ground	B1
Whitfield, Peter	The image of the World : 20 centuries of World maps	2010	Purple Ground	B912

Appendix 3

Journal subscriptions

Annals of the Association of American Geographers

Antipode

Applied ecology and environmental research

Applied geography

Area

Australian geographer

Canadian geographer

Canadian geographic

Content Development Policy: Geography

Cartographic journal
Cartographica
Cartography and geographic information systems
Cultural geographies
Economic geography
Earth surface processes and landforms
Ecology, environment and conservation
Ecos: A review of conservation
Ecumene : a journal of environment, culture, meaning
Environment and planning. A
Environment and planning. B, Planning and design
Environment and planning. C, Government and policy
Environment and planning. D, Society and space
Environment, development and sustainability
Environmental impact assessment review
Environmental management
Environmental modeling and assessment
Environmental research Espace géographique
Ethics, place and environment
Eurasian geography and economics
Gender, place and culture: a journal of feminist geography
Geoforum
Geografiska annaler
Geografiska annaler. Series A, Physical Geography
Geografiska annaler. Series B, Human Geography
Geographical analysis
Geographical and environmental modelling
Geographical journal
Geographical research
Geographical review
Geographical review of Japan
Geographische zeitschrift
Geography: Journal of the Geographical Association
Geo info systems
GeoInformatica
Geomorphology
Geopolitics
GIS: Geographic Information Systems
Global environmental change: human and policy dimensions
International journal of geographical information science
International journal of health geographics
International journal of remote sensing
International research in geographical and environmental education
Irish Geography: journal of the Geographical Society of Ireland
Journal of cultural geography
Journal of economic geography
Journal of environmental management
Journal of environmental studies and policy

Journal of geographical systems Journal of geography
 Journal of geography in higher education
 Journal of historical geography
 Journal of Latin American geography Journal of quaternary science Journal of sustainable
 tourism
 Journal of the Manchester Geographical Society The journal of the Royal Geographic Society of
 London
 Journal of transport geography
 Malaysian journal of tropical geography Manchester geographer editerran e Revue g
 ographique de ays editerran e
 New Zealand geographer
 New Zealand journal of geography
 Norsk geografisk tidsskrift. Norwegian journal of geography Oxford handbook of economic
 geography
 Political geography
 Political geography quarterly
 Population and environment
 Population, space and place
 Professional geographer
 Progress in human geography
 Progress in physical geography
 Quaternary geochronology
 Quaternary research
 Quaternary science reviews
 Regional studies
 Scottish geographical journal
 Singapore journal of tropical geography
 Social and cultural geography
 Space and polity
 Sustainable development
 Transactions – Institute of British Geographers
 Transactions in GIS
 Urban ecology
 Urban geography

Appendix 4

Listed here are other geography resources which are obtained on subscription. They include bibliographic databases, specific and general, and e-book collections.

Databases

Web of Science (Web of Knowledge) ISI Web of Science provides access to the following multidisciplinary indexes: Science Citation Index Expanded, Social Sciences Citation Index and Arts and Humanities Citation Index. Between them they contain references to some 20 million articles from 1945 onwards taken from more than 8000 journals. Over 22,000 new items are added to the indexes each week.

GeoBase is a bibliographic database covering over 2,000 journals, plus books, monographs, conference proceedings, and reports. It covers all aspects of physical and human geography, geology, ecology, oceanography and development studies. Geobase contains over a million records from 1980, with 100,000 records added annually.

GeoRef is the most comprehensive database of bibliographic information on geology and geophysics. It provides access to over 2.3 million references, covering the geology of North America from 1785 to present and the geology of the rest of the world from 1933 to present. The database covers over 3,500 journals in 40 languages, as well as conference papers, books, maps, reports and theses. Over 60,000 references are added to the database each year.

Social Sciences Index database covers articles from several hundred key international English language journals in the social sciences, dating back to 1983. Subject coverage includes economics, geography, international relations, planning and public administration, political science, social work and public welfare, sociology and urban studies.

International Encyclopedia of Human Geography The Encyclopedia provides comprehensive coverage of human geography and related subject areas.

ASSIA (Applied Social Sciences Index and Abstracts) provides bibliographic information and abstracts on health, social services, psychology, sociology, economics, politics, race relations and education from 1987 to present. The database contains over 312,000 records from 650 journals in 16 different countries, with over 1,500 records added annually.

Scopus is an abstracts database of 27 million records providing access to articles from 14,200 peer-reviewed titles from more than 4,000 international publishers.

CAB Abstracts is produced by the Centre for Agriculture and Biosciences Information. The database covers a wide range of topics including agriculture, forestry and the management and conservation of natural resources. It covers the period from 1973 to date.

Cambridge Scientific Abstracts offers access to over 50 databases covering various subjects and is of particular relevance to the earth and environmental sciences subject area. CSA covers the period from 1966 - to date depending on the database.

Digimap provides access to digital map products provided by Ordnance Survey, the mapping Agency of Great Britain. Data is available either to download to use with appropriate application software such as GIS or CAD, or as maps generated by Digimap online. Digimap is an EDINA (Edinburgh Data and Information Access) service and has been available since January 2000.

Historic Digimap (EDINA) This service gives access to the Landmark historic map collection comprising digital scans of OS paper map sheets including all available County Series Maps at 1:2,500 and 1:10560 scales published between 1843 and 1939, and all available National Grid maps at 1:1,250, 1:2,500 and 1:10560/10,000 scales published from 1945..

Geology Digimap (EDINA) This service delivers geological maps and data from the British Geological Survey. Geological maps and data are available at scales of 1:50,000, 1:250,000 and 1:625,000.

Landmap service gives access to spatial data-sets derived from satellite data archives. Access is available from on-campus computers only.

Landsat Satellite Data This hosts extensive archives of satellite data from Landsat.

Spot Satellite Data / Quick Looks The SPOT satellite Earth Observation System was designed by the CNES (Centre National d'Etudes Spatiales), in France, and developed with the participation of Sweden and Belgium. The first SPOT satellite was launched in February, 1986. Since then, the launch pad Ariane, located in French Guiana, has put three more SPOT satellites into orbit to keep the SPOT system operational for nearly fifteen years. The SPOT archive is composed of

152 images covering the whole of the British Isles from the early 1990s. Access is available from on-campus computers only.

ESDS International provides access to, and support for, a range of regularly updated international datasets from international organisations including the International Energy Agency, Organisation for Economic Co-operation and Development, UNIDO and World Bank.

E-book collections

The Library subscribes to several collections of e-books. The most relevant resources for Geography are;

Academic Library The service provides full-text access to a large collection of books in a range of subject areas including geography, sustainable development and development studies.

Elsevier ScienceDirect Books offers full-text access to a collection of books in a range of subject areas including earth and environmental sciences.

Net Library provides full-text access to over 10,000 books, plus over 340 publicly accessible e-books in a range of subject areas. It is possible to search the entire collection or to search within a specific title. The publishers represented include Blackwells, Cambridge University Press, Oxford University Press, Elsevier, Taylor and Francis, McGraw-Hill and Wiley.

Springer This service provides access to a large number of books in a range of subject areas including earth and environmental science and social sciences.

A complete listing of e-books in all subject areas and advice about accessing these resources is provided on the Library's Electronic Books web page

Appendix 5

Special Collections

The Library does not actively collect Special Collections material in this area, and purchases of material are generally considered a low priority (except rare and significant editions of key texts). However we will give careful consideration to any offers to donate or deposit Special Collections material in this area.

The Library has significant Special Collections holdings for this subject, particularly maps and atlases. Collections such as the Mills, Booker and Manchester Geographical Society are particularly important for the history of cartography and map-making. Other printed resources held by Special Collections include similar subject matter.