

The University of Manchester Library Content Development Policy Architecture

Monday, 30 April 2012

Contents

Introduction	2
Collection evaluation	2
Bookfund and resource allocations.....	3
Collection areas.....	3
Document Supply Service and Inter-Library Loans.....	4
Teaching and Learning	4
Digitisation.....	4
Manchester e-Scholar.....	4
Stock editing	4
Donations	5
Recommendations	5
Contacts	5
Appendices	5
Appendix 1.....	5
Appendix 2	8
Appendix 3	11
Appendix 4.....	13
Appendix 5	14

Introduction

This document presents the Content Development Policy for Architecture (School of Environment and Development). It includes a description of the Library's existing collections and an outline of current collecting areas.

Set within the context provided by an overall Content Development Policy and a related Collection Management Policy, its purpose is to ensure that the selection of resources - books, journals, and other kinds of material – whether in print, electronic or other format, reflect the teaching and research priorities of the School and provide best value in both financial and academic terms.

The Manchester School of Architecture was created in 1966 by an amalgamation of the Architecture schools in the University of Manchester and Manchester Metropolitan University. The MSA is a joint School of the University of Manchester's School of Environment and Development and the Manchester Metropolitan University's Faculty of Art and Design.

The School currently has over 600 undergraduate students, with a 1st year intake of about 300. It offers 2 undergraduate courses (BA (Hons) Architecture and BArch) and one MA programme. Architecture students are registered with both institutions and are entitled to use both libraries.

However, as most of the undergraduate teaching takes place in the Manchester Metropolitan University, the MMU Library tends to purchase copies of all core texts required by UG students and publishes the reading lists for those programmes on their Library website. The John Rylands University Library also buys some of the books required by UG students, but purchases mostly books required by PGT and PGR students. Both libraries buy books requested by the academic staff and the researchers in the School of Architecture and the Manchester Architecture Research Centre (MARC) which was established in 2004 and is located within the School of Environment and Development.

Collection evaluation

The Library has substantial collections in all fields of architecture and includes books and journals, in print and digital formats. The main collection of printed books, including all reading list items, is kept on Blue 4 in the Main Library but a significant collection is also housed in the Kantorowich Library. There are also a number of books relevant to Architecture (particularly construction and structural design) held in the Joule Library.

Most architecture books are shelved at 711-712 and 720-729.

Appendix 1: Provides an overview of the Architecture bookstock by classmark, date of publication, and location.

Appendix 2: Lists the books purchased from the Architecture book fund during the 2008-09 financial year, excluding items purchased as part of other subscriptions. The John Rylands University Library – Content Development Policy for Architecture 2

Appendix 3: Lists current journal subscriptions in the area of architecture.

Because of the difficulties in deciding on what constitutes an architecture journal, it is not necessarily a complete list. However all journal holdings and subscriptions are listed in the Library catalogue, and all subscriptions to electronic journals are listed in its E-Journals A-Z listing.

Appendix 4: Lists other relevant subscriptions to bibliographic databases and book collections in the area.

Appendix 5: Lists Architectural texts held in Special Collections.

Bookfund and resource allocations

Book funds are allocated in June/July each year for the following financial year (August – July). This book fund is to provide for all non-subscription library materials including printed textbooks and research monographs, electronic books, and any other one-off purchase requirements.

Journals and other subscription items are purchased from a separate fund which at present accounts for over 85% of the cost of all purchases.

Collection areas

To support Architecture's scholarly and research activities the Library will acquire material published in the areas listed below.

Architecture and society

Architectural design

Architectural history

Architectural management and practice

Architectural structures

Buildings (public structures / religious / educational / residential)

Community planning

Conservation and management of historic environments

Construction industry – environmental aspects

Contemporary and historic architects

Design and decoration of structures

Development and management of built environments

Ecological and landscape design

Land and development

Landscape architecture

Planning theory and ethics

Spatial policy and planning

Sustainable urbanism

Technological innovation and urban change

Transport planning

Urban design

Urban development

Urban environment

Urban planning

The interdisciplinary nature of architecture and its publications means that the subject scope and coverage cannot be described in isolation. Please also refer to the content development policy for Planning and Landscape.

Document Supply Service and Inter-Library Loans

Although the Library will try to accommodate all requests for purchase, books which lie outside the areas listed above or are out of print can be obtained on loan from another library through the Document Supply Service. Such books are usually borrowable for up to 6 weeks at a time. Journal articles and other material not available from within the Library's collections can also be obtained through this service.

Teaching and Learning

The Library will support all taught course modules. Multiple copies and / or electronic copies of texts will be purchased or subscribed to as appropriate. Subject to copyright restrictions the Library will digitise materials, for instance book chapters, or journal articles not otherwise available electronically, if required for taught course modules.

Digitisation

Subject to copyright restrictions the Library will digitise material according to its Digitisation Policy. Priorities include reading list items – book chapters or journal papers – and items from Special Collections.

Manchester e-Scholar

The University's institutional repository, Manchester eScholar, manages and disseminates the intellectual outputs of the university. Since the beginning of 2010 all accepted PhD theses have been added to the repository.

Stock editing

Most stock is kept on the Library's open shelves. As space is at a premium, especially in the Main Library, periodic weeding is used to remove less-well used material to store from where it can be retrieved usually within one working day.

Unused duplicates are disposed of from time to time.

Weeding and withdrawal criteria are described in the Collection Management Policy.

Donations

Offers of donations are welcome, but they can normally only be considered for acceptance if they are within the collection areas detailed above

Other factors taken into account in deciding upon acceptance are listed in the Collection Management Policy.

Recommendations

The Library welcomes recommendations for the purchase of books from staff and students of the School. Purchases are normally made if:

- Recommendations fall within the scope of the policy as described above;
- Funds are available;
- The item is not already in stock.

Usually:

- Only a single copy only of a printed book is purchased.
- They must be of an appropriate academic standard.

For reading list texts, multiple copies and electronic versions will be considered as appropriate. Recommendations can be made directly to the Faculty Team Librarian, or by filling in this form. Journal recommendations are considered twice a year in March and November. Because of the forward financial commitment involved journal subscriptions usually have to be balanced by savings elsewhere in the subscription budget. Recommendations should be made through the School Library Representative.

Contacts

Faculty Team Librarian, Architecture: Françoise Sullivan
0161-275 2802
Francoise.sullivan@manchester.ac.uk

Appendices

Appendix 1

Stock Overview

Architecture Stock, Main Library: Analysis

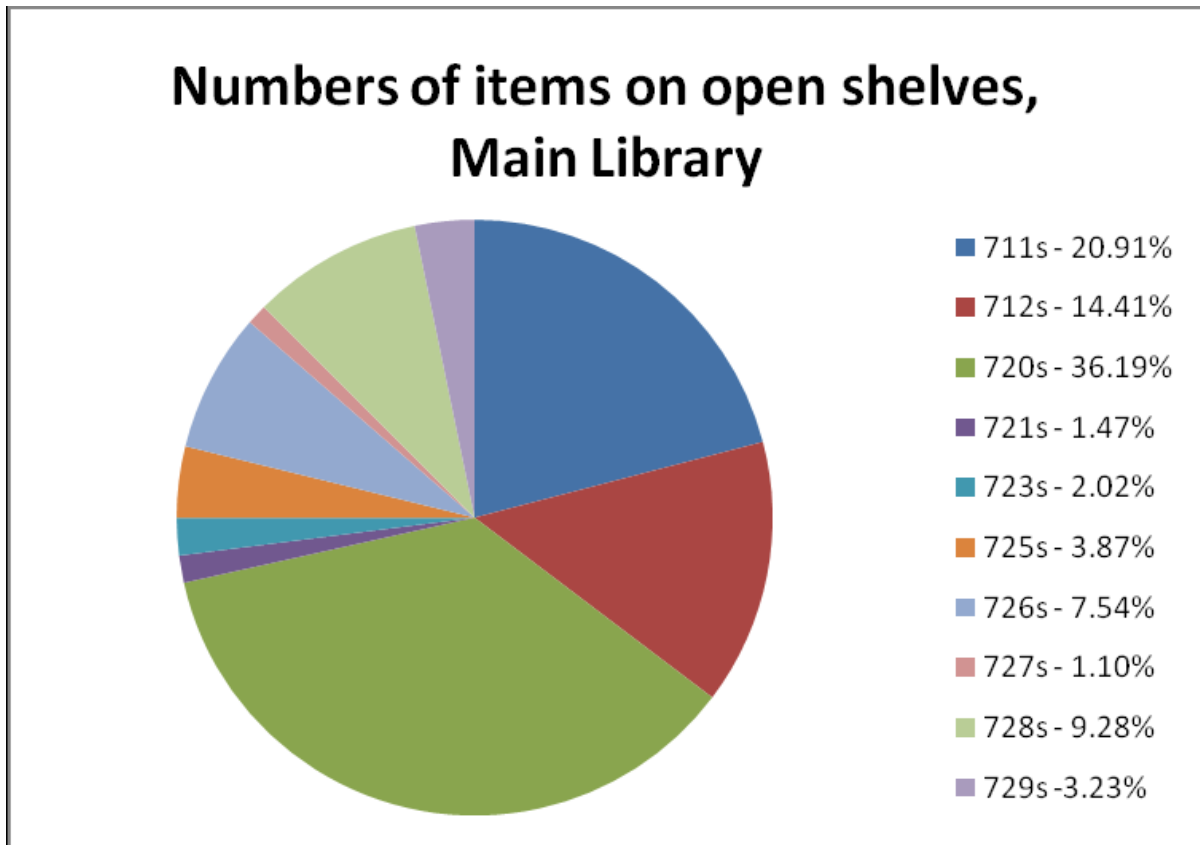


Figure 1

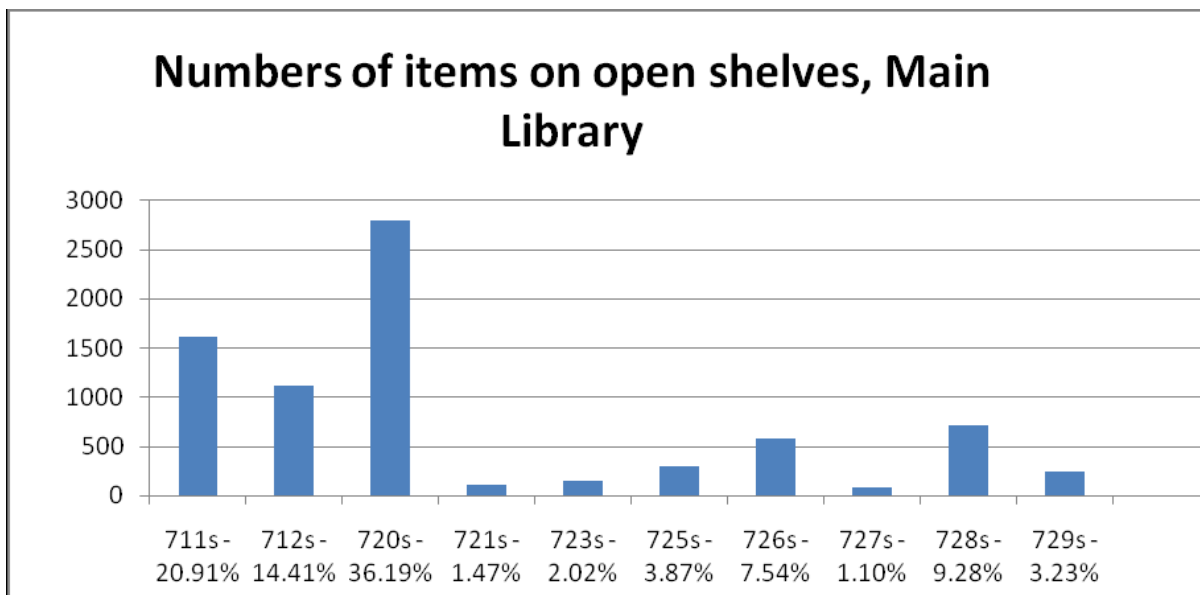


Figure 2

Architecture Stock by Date

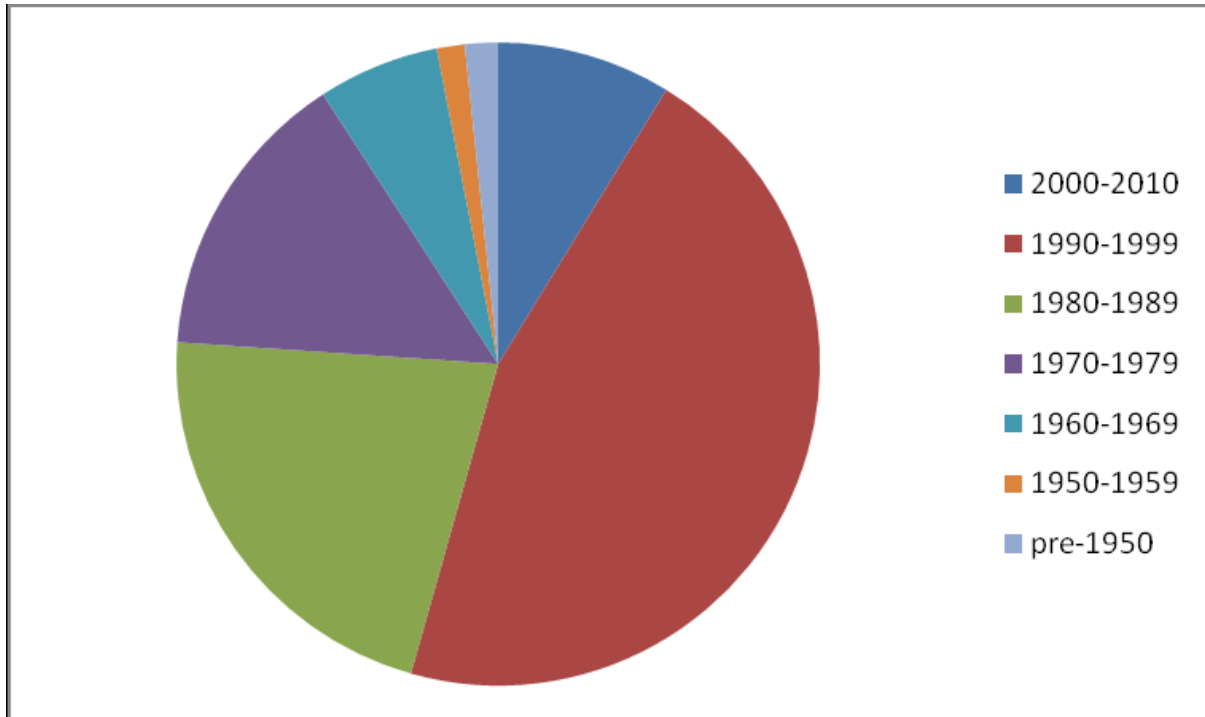


Figure 3

Architecture Stock, **Kantorowich Library**: Analysis

Architecture Stock by Classification

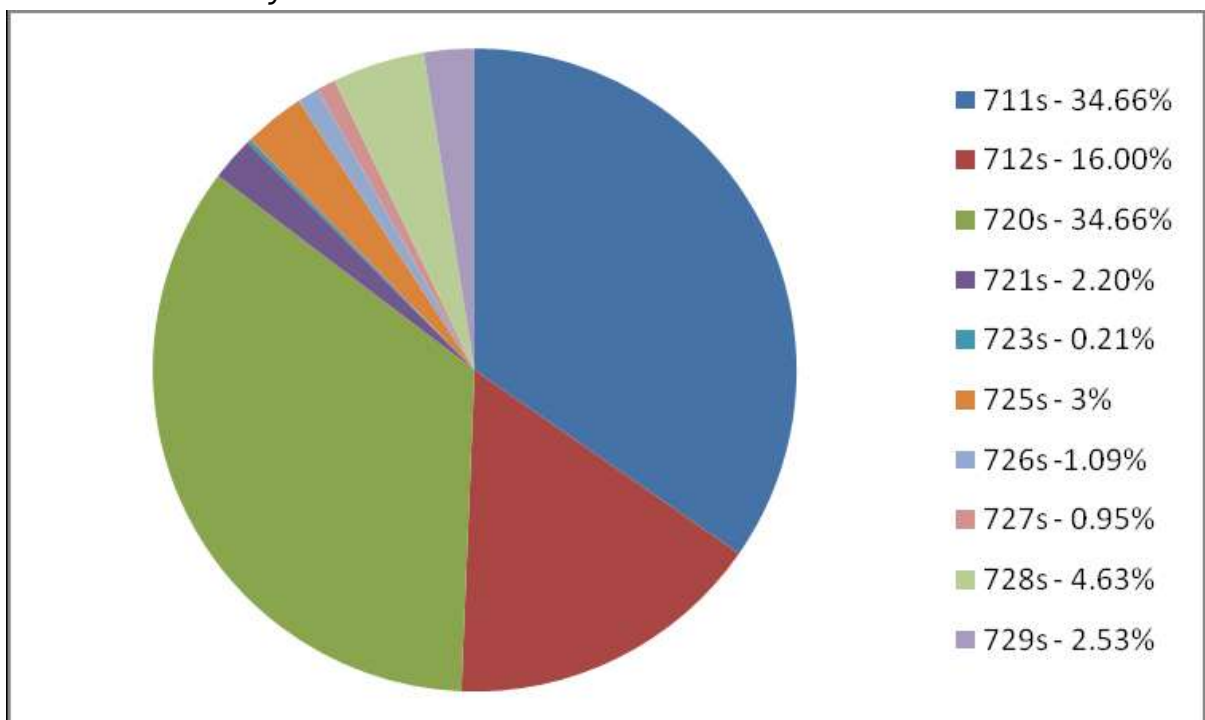


Figure 4

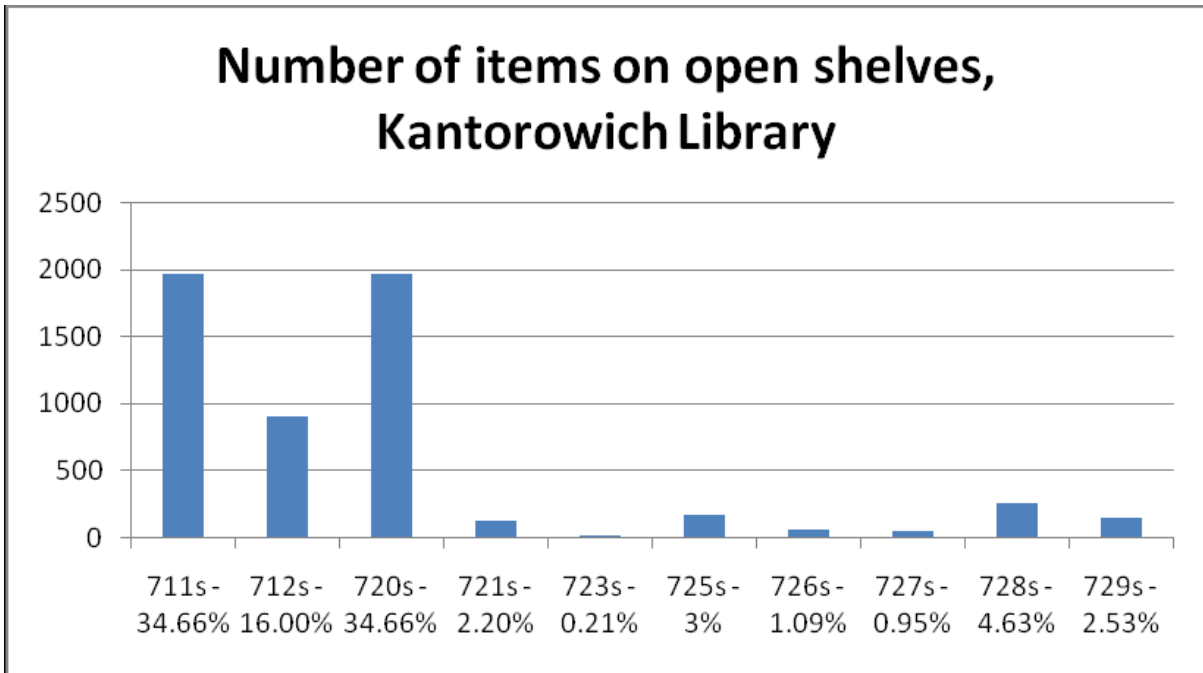


Figure 5

Appendix 2

Book purchases 2009-2010

Roberts, P.	Environment and the city	2009	High Demand	711.001
Ritchie, Adam; Thomas, Randall	Sustainable urban design : an environmental approach	2009	High Demand	711.001
Emmanuel, M.	An urban approach to climate-sensitive design : strategies for the tropics	2005	Blue Area Floor 4	711.001
Benedict, Mark A.	Green infrastructure : linking landscapes and communities	2006	Blue Area Floor 4	711.14
Robert Davis, Andres Duany, and Elizabeth	Hertfordshire guide to growth-2021 : how	2009	Blue Area Floor 4	711.2

Plater-Zyberk (Firm); University of Hertfordshire Du`hr, Stefanie	should the county grow European spatial planning and territorial co-operation	2010	Blue Area Floor 4	711.2
Scandaletti, Chiara; Garau, Pietro; Zaccagnini, Arianna Ng, Edward	Barefoot & Prada : architects and planners, the urban poor Designing high density cities : for social and environmental	2008 2010	High Demand Blue Area Floor 4	711.4 711.4
Koonings, Kees; Kruijt, Dirk	Fractured cities : social exclusion, urban violence and contested spaces	2007	High Demand	711.4
Rydin, Yvonne,	Governing for sustainable urban development	2010	Blue Area Floor 4	711.4
Hermansen Cordua, Christian	Manifestoes and transformations in the early modernist city	2010	Blue Area Floor 4	711.4
United Nations Human Settlements Programme	Planning sustainable cities : global report on human settlements 2009	2009	Blue Area Floor 4	711.4
Elsheshtawy, Yasser	The evolving Arab city : tradition, modernity and urban development	2008	Blue Area Floor 4	711.4
Larice, M..	The urban design reader	2007	Blue Area Floor 4	711.4
Punter, John	Urban design and the British urban	2010	Blue Area Floor 4	711.4

Brown, Lance Jay	renaissance Urban design for an urban century :	2009	Blue Area Floor 4	711.4
Carmona, Matthew	Public space : the management dimension	2008	Blue Area Floor 4	711.4
Duany, Andres	Smart growth manual	2010	Blue Area Floor 4	711.4
Graves, Charles P.	The genealogy of cities	2009	Blue Area Floor 4	711.4
Hamdi, Nabeel	The placemaker's guide to building community	2010	Blue Area Floor 4	711.4
Karlenzig, Warren	How green is your city?	2007	Blue Area Floor 4	711.4
Marshall, Stephen,	Streets & patterns	2005	Blue Area Floor 4	711.4
Pevsner, Nikolaus	Visual planning and the picturesque	2010	Blue Area Floor 4	711.4
Shaftoe, Henry	Convivial urban spaces : creating effective public places	2008	Blue Area Floor 4	711.4
Tibaijuka, Anna Kajumulo	Building prosperity : the centrality of housing in economic development	2009	Blue Area Floor 4	711.4
Mace, Alan; Institute of Community Studies	Shrinking to grow? : the urban regeneration challenge In Leipzig	2004	Blue Area Floor 4	711.416
Madgin, Rebecca	Heritage, culture and conservation : managing urban renaissance	2009	Blue Area Floor 4	711.416
Waldheim, R.	The landscape urbanism reader	2006	Blue Area Floor 4	712
Harman, P. M.	The culture of	2009	High Demand	712.01

(Peter Michael), nature in Britain,
1680-1860

Appendix 3

Journal subscriptions

Architects' journal
Architectural design
Architectural history
AIJ (Architectural Institute of Japan) Journal of technology and design
AJ Focus
Architectural record
Architectural research quarterly
Architectural review
Architectural science review
Architecture + Detail: A+D
Architecture: the American Institute of Architects journal
Architecture today
Arup journal
Axis: The Journal of housing, planning and regeneration
Builder
Building
Building and environment
Building design
Building design & construction
Built environment Building research and information: the international journal of research, development and demonstration Canadian architect
City
Cities
Computers and urban society
Computers, environment and urban systems
Design.build
Design Quarterly
Design studies
Environment and Urbanization
European journal of housing policy
Housing studies
Housing and planning review
Housing, theory and society
Indoor and built environment
International journal of urban and regional research
JAE
Journal of architectural and planning research
Journal of architectural education
Journal of architectural engineering

Journal of architectural research (RIBA)
Journal of architecture (RIBA)
Journal of design history
Journal of Housing
Journal of housing and the built environment
Journal of housing and community development
Journal of housing economics
Journal of housing law
Journal of housing research
Journal of planning literature
Journal of property research
Journal of the American Society of Architectural Historians
Journal of the Society of Architectural Historians
Journal of urban affairs
Journal of urban design
Journal of urban economics
Journal of urban history
Journal of urban planning and development
Journal of urban regeneration and renewal
Journal of urban technology
Land economics: a quarterly journal of planning, housing and public utilities
Landscape and urban planning
Landscape architecture
Landscape ecology
Landscape history: journal of the Society for Landscape Studies
Landscape journal
Landscape management
Multi housing news
Perspecta
Perspectives in vernacular architecture
Planning: for the natural and built environment
Research in urban policy
RIBA journal
Space and culture: The journal
Streetwise: National Association for Urban Studies
The structural design of tall and special buildings
Town planning review
Urban design international
Urban design quarterly
Urban ecology
Urban environment today
Urban history
Urban morphology
Urban studies

Appendix 4

Other Current Subscriptions

Listed here are other architecture resources which are obtained on subscription. They include bibliographic databases, specific and general, and e-book collections.

Databases

Arts and Humanities Citation Index (Web of Science) This Index provides access to current and retrospective bibliographic information and cited references found in nearly 1,130 of the world's leading arts & humanities journals.

ARTstor ARTstor provides approximately 500,000 images covering artistic traditions across many times and cultures: architecture, painting, sculpture, photography, decorative arts, and design as well as many other forms of visual culture.

British Standards Online This is the most current site for all BSI publications. Updated daily, the site includes over 38,500 current, draft and historic British Standards, more than 16,000 of which are BSI adopted European and International standards.

Construction Information Service This is a comprehensive source of technical information for the construction industry produced jointly by the NBS and IHS. It contains the full text of a wide range of documents relevant to the construction industry in the UK including regulatory and advisory documents, reports and standards.

Digimap Digimap provides access to digital map products provided by Ordnance Survey, the mapping Agency of Great Britain. Data is available either to download to use with appropriate application software such as GIS or CAD, or as maps generated by Digimap online. Digimap allows you to view and print maps of any location in Great Britain at a series of predefined scales. Digimap is an Edina (Edinburgh Data and Information Access) service and has been available since January 2000.

Grove Art Online (Oxford Art Online) Grove Art Online provides access to the entire text of The Dictionary of Art, and The Oxford Companion to Western Art. The service includes over 1,500 thumbnail art images and line drawings displayed in the text of articles, extensive image links and sophisticated search and navigation tools.

Historic Digimap This service provides access to the Landmark historic map collection comprising digital scans of OS paper map sheets including all available County Series Maps at 1:2,500 and 1:10560 scales published between 1843 and 1939, and all available National Grid maps at 1:1,250, 1:2,500 and 1:10560/10,000 scales published from 1945.

Humanities Index This Index covers about 350 periodicals within the humanities area including such topics as archaeology and art.

Occupational Health and Safety Information Service (OHSIS) OHSIS provides access to the full-text of key documents relating to workplace health and safety in the UK and Ireland produced by organisations both within and outside the UK, including HSE, NIOSH and RoSPA. It also includes the text of relevant UK and European legislation and British Standards

RUDI - Resource for Urban Design Information This web site provides access to information on urban design. RUDI commissions, researches and creates materials and also re-publishes documents contributed by professional and government bodies, practitioners, academics and community organizations.

Scopus. Scopus is an abstracts database of 27 million records providing access to articles from 14,200 peer-reviewed titles from more than 4,000 international publishers.

Social Sciences Citation Index (Web of Science) This index provides access to current and retrospective bibliographic information, author abstracts, and cited references found in over 1700 of the world's leading scholarly social sciences journals covering more than 50 disciplines.

E-book collections

The Library subscribes to several collections of e-books. The most relevant resources for Architecture are;

Net Library. This service provides full-text access to over 10,000 books, plus over 340 publicly accessible e-books in a range of subject areas. It is possible to search the entire collection or to search within a specific title. The publishers represented include Blackwells, Cambridge University Press, Oxford University Press, Elsevier, Taylor and Francis, McGraw-Hill and Wiley.

Springer This service provides access to a large number of books in a range of subject areas including architecture and design.

A complete listing of e-books in all subject areas and advice about accessing these resources is provided on the Library's Electronic Books web page.

Appendix 5

The Library does not actively collect Special Collections material in this area, and purchases of material are generally considered a low priority. However, we will give careful consideration to any offers to donate or deposit material in this area.

Special Collections contains significant archival collections which support research into some areas of architectural history (especially those which are local in scope). They include:

- The archives of the John Rylands Library which include records of its design and construction.
- The archives of Manchester Society of Architects and the Society of Architectural Historians of Great Britain.
- Papers of noteworthy individual architects including, for example, those of Sir Hubert Worthington, Alfred Darbyshire, Sir Raymond Unwin, and Edward Freeman.

The printed holdings contain an excellent collection of historical architectural surveys and treatises including, for example, first editions of works by Alberti, Palladio, Robert Adam, Sir John Soane and Joseph Nash.